

REVISIONS			
REV	DESCRIPTION	DATE	APPROVED

NOTES:

1. THE PRODUCT SHOWN HEREIN IS DESIGNED AND MANUFACTURED TO COMPLY WITH REQUIREMENTS OF THE 2006 IBC, 2006 IRC WITH STATE OF TEXAS MODIFICATIONS.
2. WOOD FRAMING TO BE DESIGNED AND ANCHORED TO PROPERLY TRANSFER ALL LOADS TO STRUCTURE. FRAMING IS THE RESPONSIBILITY OF THE ARCHITECT OR ENGINEER OF RECORD.
3. ALLOWABLE STRESS INCREASE OF 1/3 WAS NOT USED IN THE DESIGN OF THE PRODUCT SHOWN HEREIN. WIND LOAD DURATION FACTOR Cd=1.6 WAS USED FOR WOOD ANCHOR CALCULATIONS.
4. APPROVED IMPACT PROTECTIVE SYSTEM IS NOT REQUIRED FOR THIS PRODUCT IN WIND BORNE DEBRIS REGIONS UP TO WIND ZONE 3.
5. DESIGN PRESSURE AND INSTALLATION DETAILS SHOWN IN THIS DOCUMENT APPLY ONLY TO MULLION. WINDOWS MUST BE APPROVED UNDER SEPARATE APPROVAL.
6. SINGLE WINDOWS TO BE MULLED ARE NOT LIMITED TO THOSE SHOWN IN THIS DRAWING. WINDOWS MUST BE MANUFACTURED BY VISTAMARK ENTERPRISES, LLC.
7. DESIGN PRESSURE OF MULLED UNIT SHALL BE CONTROLLED BY THE LESSER DESIGN PRESSURE OF THE MULLION OR THE INDIVIDUAL WINDOW OR DOOR UNIT.
8. UNITS MAY BE MULLED TOGETHER INDEFINITELY AS LONG AS SINGLE UNIT WIDTH AND HEIGHT ARE NOT EXCEEDED AND MULLION IS ANCHORED AS SHOWN HEREIN.
9. MULLION VERTICAL INSTALLATION IS SHOWN, MULLION MAY BE USED IN HORIZONTAL APPLICATIONS AS LONG AS DIMENSIONS INDICATED HEREIN ARE NOT EXCEEDED AND MULLION IS ANCHORED ACCORDING TO THIS DOCUMENT.

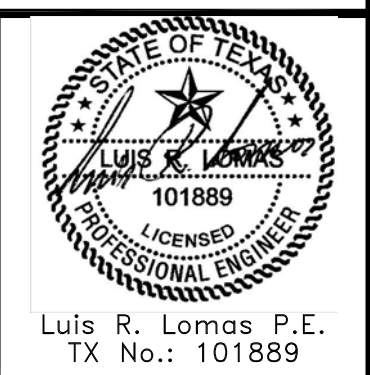
ANCHORING NOTES:

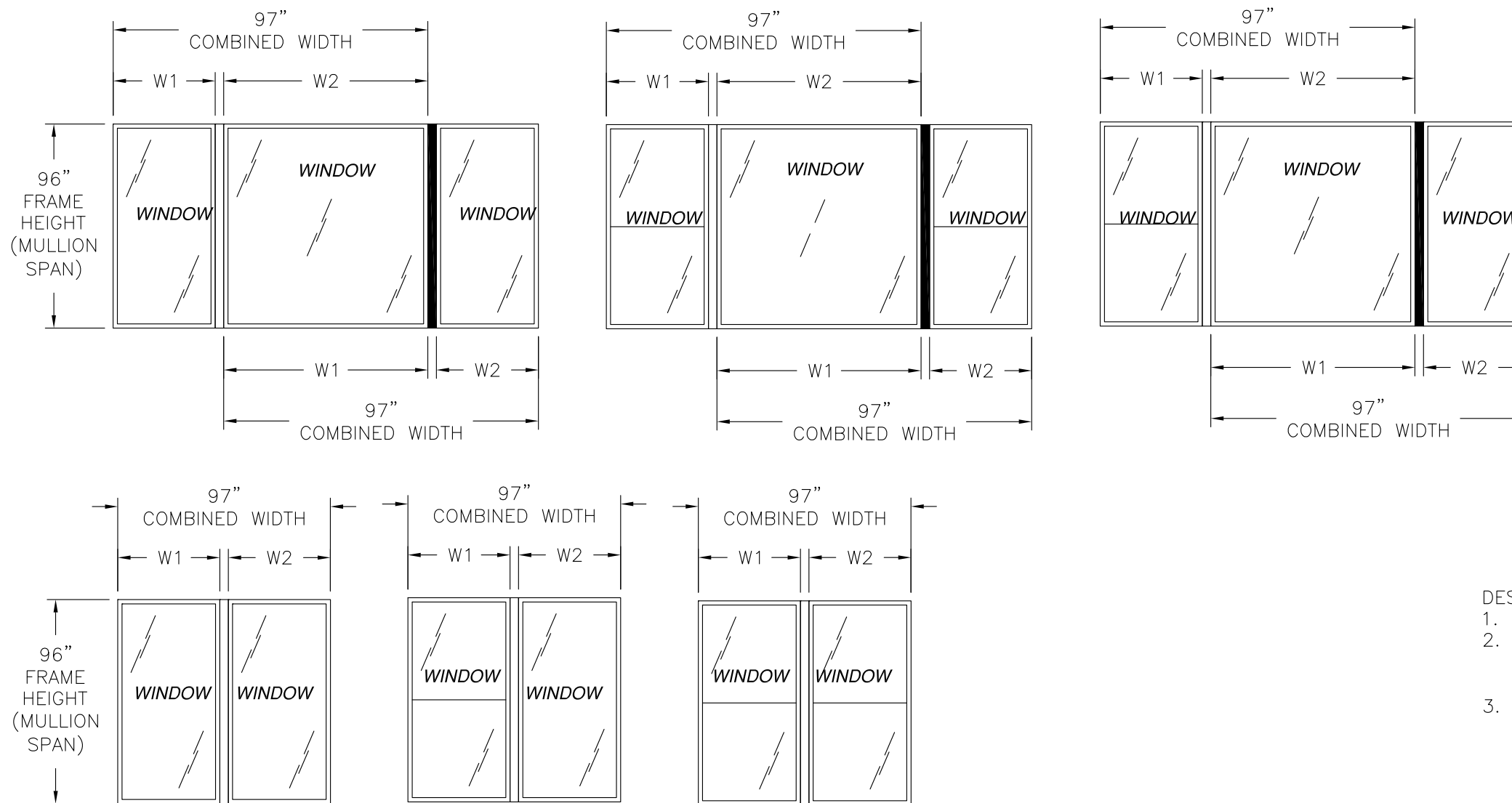
1. FOR ANCHORING INTO WOOD FRAMING OR 2X BUCK USE #10 WOOD SCREW WITH SUFFICIENT LENGTH TO ACHIEVE A 1 1/4" MINIMUM EMBEDMENT. LOCATE ANCHORS AS SHOWN IN INSTALLATION DETAILS SHEET 3.
2. FOR ANCHORING INTO CONCRETE USE 3/16" TAPCON WITH SUFFICIENT LENGTH TO ACHIEVE A 1 1/4" MINIMUM EMBEDMENT WITH 2 1/2" MINIMUM EDGE DISTANCE. LOCATE ANCHORS AS SHOWN IN INSTALLATION DETAILS SHEET 4.
3. FOR ATTACHING WINDOW UNITS TO MULLION USE #10 SELF DRILLING SCREWS WITH SUFFICIENT LENGTH TO ACHIEVE A MINIMUM EMBEDMENT OF THREE THREADS PAST THE MULLION WALL. LOCATE SCREWS IN ACCORDANCE WITH WINDOW ANCHORING SCHEDULE AS SHOWN IN WINDOW SEPARATE APPROVAL.
4. ALL FASTENERS TO BE CORROSION RESISTANT.
5. INSTALLATION ANCHORS SHALL BE INSTALLED IN ACCORDANCE WITH ANCHOR MANUFACTURER'S INSTALLATION INSTRUCTIONS, AND ANCHORS SHALL NOT BE USED IN SUBSTRATES WITH STRENGTHS LESS THAN THE MINIMUM STRENGTH SPECIFIED BELOW:
  - A. WOOD – MINIMUM SPECIFIC GRAVITY OF G=0.42
  - B. CONCRETE – MINIMUM COMPRESSIVE STRENGTH OF 3,200 PSI.
  - C. MASONRY – STRENGTH CONFORMANCE TO ASTM C-90, GRADE N, TYPE 1 (OR GREATER).
6. TO ATTACH MULLION TO CLIP USE (4) #8 x 1/2" SELF DRILLING SCREWS PER CLIP. SCREWS MUST BE FIELD INSTALLED. HOLES FOR SCREWS ARE NOT PRE-DRILLED BY MANUFACTURER.

SIGNED: 09/15/2015

TABLE OF CONTENTS	
SHEET NO.	DESCRIPTION
1	NOTES
2	APPROVED CONFIGURATIONS
3 – 8	INSTALLATION DETAILS
9	COMPONENTS

<b>VISTAMARK ENTERPRISES, LLC</b> 3637 N HIGHWAY 77, SUITE C WAXAHACHIE, TX 75165		
<b>793.800 VERTICAL MULLION IMPACT NOTES</b>		
DRAWN: R.L.	DWG NO. 08-02748	REV -
SCALE NTS	DATE 07/23/2015	SHEET 1 OF 9





REVISIONS			
REV	DESCRIPTION	DATE	APPROVED

- DESIGN PRESSURE TABLE INSTRUCTIONS:
1. DEFINE REQUIRED DESIGN LOAD PER 2006 IBC CHAPTER 16.
  2. DETERMINE TRIBUTARY WIDTH AND MULLION SPAN BASED ON PRODUCT TO BE INSTALLED. SEE FORMULA FOR TRIBUTARY WIDTH.
  3. LOCATE MULLION SPAN (UNIT HEIGHT) AND TRIBUTARY WIDTH. AT THE INTERSECTION OF ROW AND COLUMN CONTAINING THE MULLION SPAN AND TRIBUTARY WIDTH RESPECTIVELY IS THE MULLION RATING FOR PRODUCT IN STEP 2. MULLION RATING MUST BE EQUAL OR GREATER THAN REQUIRED DESIGN PRESSURE OBTAINED IN STEP 1.

$$\text{TRIBUTARY WIDTH} = \frac{W1 + W2}{2}$$

**APPROVED CONFIGURATIONS**

<b>New construction</b>									
<b>Design pressure rating (psf)</b>									
Mullion span (in)	Tributary width (in)								
	24.00	27.00	30.00	33.00	36.00	39.00	42.00	45.00	48.00
24.00	250.0	250.0	250.0	250.0	250.0	250.0	250.0	250.0	250.0
30.00	250.0	250.0	249.9	249.9	249.9	249.9	249.9	249.9	249.9
36.00	195.3	185.1	178.5	174.8	173.6	173.6	173.6	173.6	173.6
42.00	156.2	146.2	138.9	133.7	130.2	128.2	127.5	127.5	127.5
48.00	130.2	120.7	113.6	108.2	104.1	101.2	99.2	98.0	97.6
54.00	111.6	102.9	96.1	90.9	86.8	83.6	81.2	79.3	78.1
60.00	97.6	89.6	83.3	78.4	74.4	71.2	68.7	66.7	65.1
66.00	84.0	75.8	69.3	64.2	60.0	56.6	53.9	51.6	49.8
72.00	64.2	57.7	52.7	48.6	45.3	42.6	40.4	38.5	36.9
78.00	50.1	45.0	41.0	37.7	35.1	32.9	31.1	29.5	28.2
84.00	39.9	35.8	32.5	29.9	27.8	26.0	24.5	23.2	22.1
90.00	32.3	28.9	26.3	24.1	22.3	20.9	19.6	18.6	17.7
96.00	26.5	23.7	21.5	19.7	18.3	17.0	16.0	15.1	-

IMPACT RATED UP TO WIND ZONE 3

<b>Replacement construction</b>									
<b>Design pressure rating (psf)</b>									
Mullion span (in)	Tributary width (in)								
	24.00	27.00	30.00	33.00	36.00	39.00	42.00	45.00	48.00
24.00	250.0	250.0	250.0	250.0	250.0	250.0	250.0	250.0	250.0
30.00	250.0	250.0	250.0	250.0	250.0	250.0	250.0	250.0	250.0
36.00	225.0	213.3	205.7	201.4	200.0	200.0	200.0	200.0	200.0
42.00	180.0	168.4	160.0	154.0	150.0	147.7	146.9	146.9	146.9
48.00	150.0	139.1	130.9	124.6	120.0	116.6	114.3	112.9	112.5
54.00	128.5	118.5	110.7	104.7	100.0	96.3	93.5	91.4	90.0
60.00	112.5	102.3	93.9	87.3	81.8	77.3	73.7	70.8	68.6
66.00	84.0	75.8	69.3	64.2	60.0	56.6	53.9	51.6	49.8
72.00	64.2	57.7	52.7	48.6	45.3	42.6	40.4	38.5	36.9
78.00	50.1	45.0	41.0	37.7	35.1	32.9	31.1	29.5	28.2
84.00	39.9	35.8	32.5	29.9	27.8	26.0	24.5	23.2	22.1
90.00	32.3	28.9	26.3	24.1	22.3	20.9	19.6	18.6	17.7
96.00	26.5	23.7	21.5	19.7	18.3	17.0	16.0	15.1	-

IMPACT RATED UP TO WIND ZONE 3

VISTAMARK ENTERPRISES, LLC  
3637 N HIGHWAY 77, SUITE C  
WAXAHACHIE, TX 75165

793.800 VERTICAL MULLION  
IMPACT  
APPROVED CONFIGURATIONS

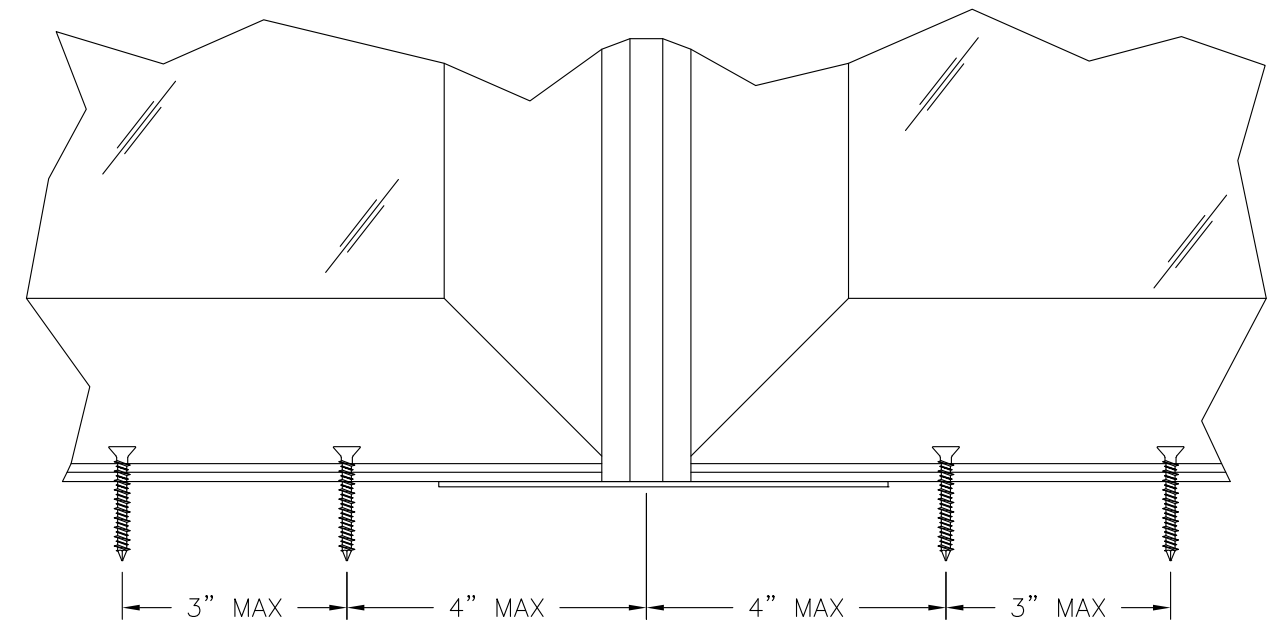
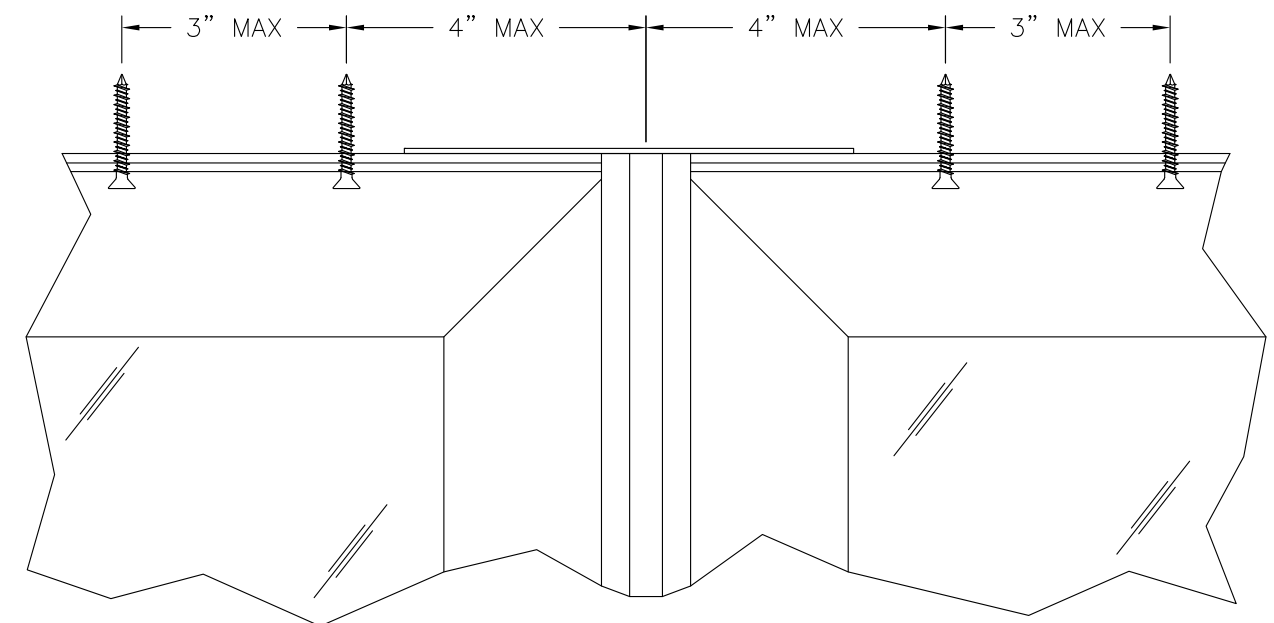
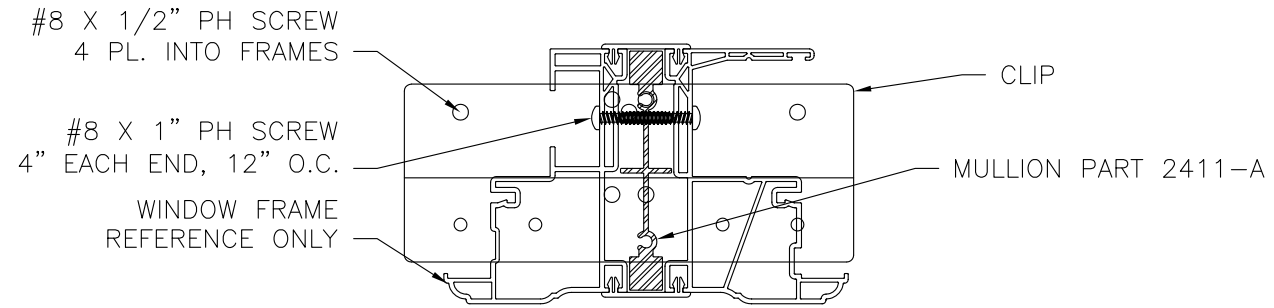
DRAWN: R.L.	DWG NO. 08-02748	REV -
SCALE NTS	DATE 07/23/2015	SHEET 2 OF 9

SIGNED: 09/15/2015

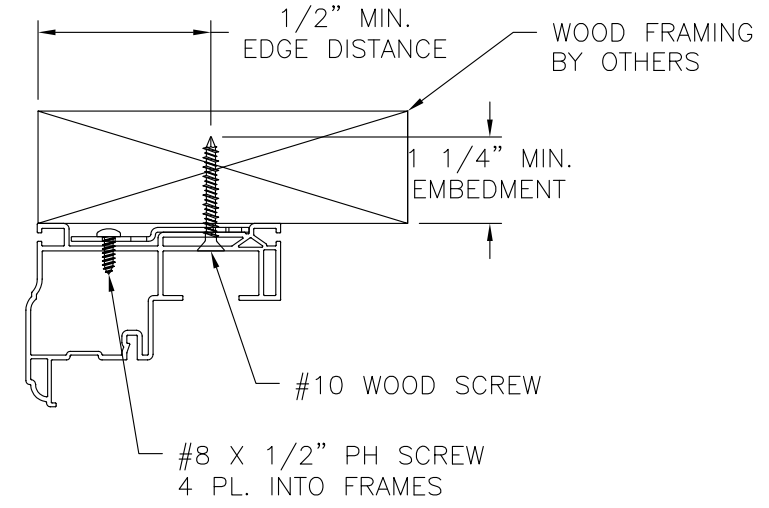


Luis R. Lomas P.E.  
TX No.: 101889

REVISIONS			
REV	DESCRIPTION	DATE	APPROVED



**VERTICAL SECTION**  
WOOD FRAMING OR 2X BUCK INSTALLATION



VISTAMARK ENTERPRISES, LLC  
3637 N HIGHWAY 77, SUITE C  
WAXAHACHIE, TX 75165

793.800 VERTICAL MULLION  
IMPACT  
REPLACEMENT INSTALLATION DETAILS

DRAWN: R.L.	DWG NO. 08-02748	REV -
SCALE NTS	DATE 07/23/2015	SHEET 3 OF 9

SIGNED: 09/15/2015

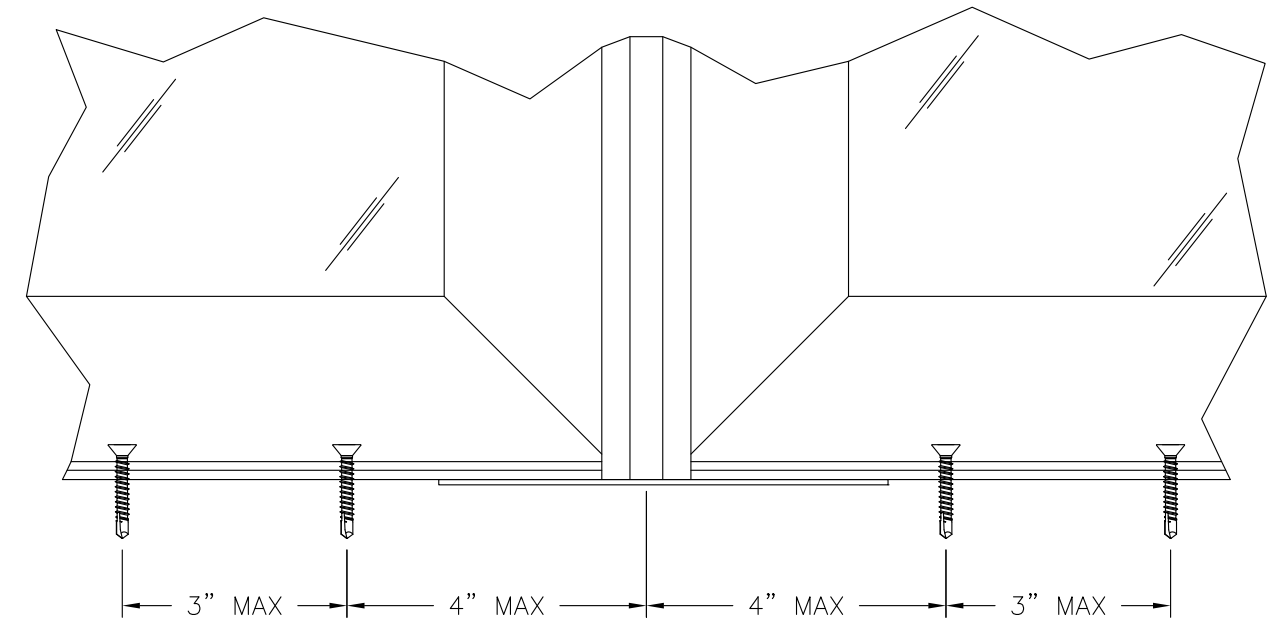
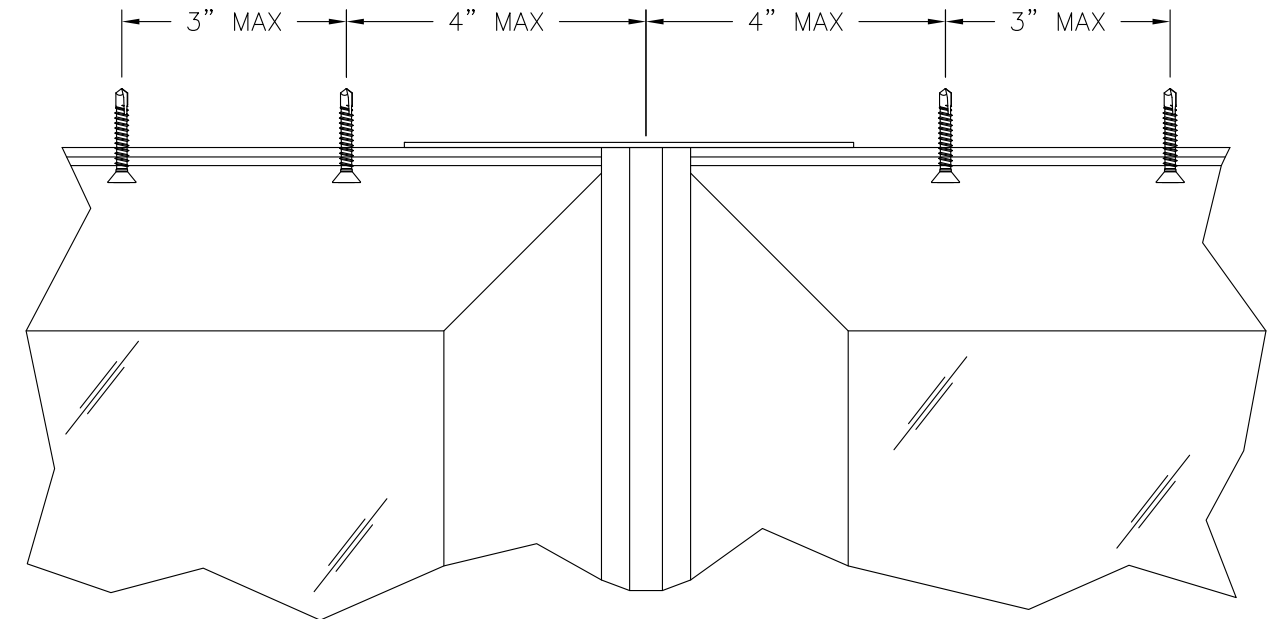
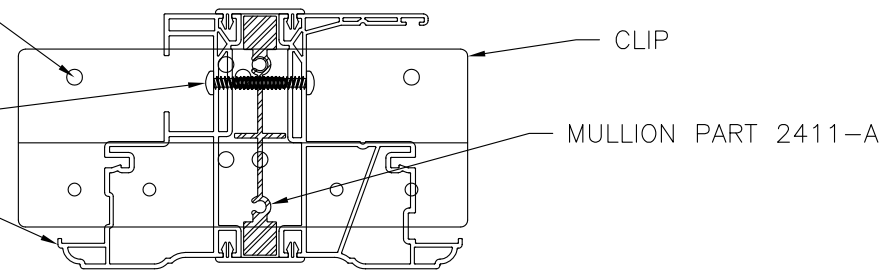


Luis R. Lomas P.E.  
TX No.: 101889

#8 X 1/2" PH SCREW  
4 PL. INTO FRAMES

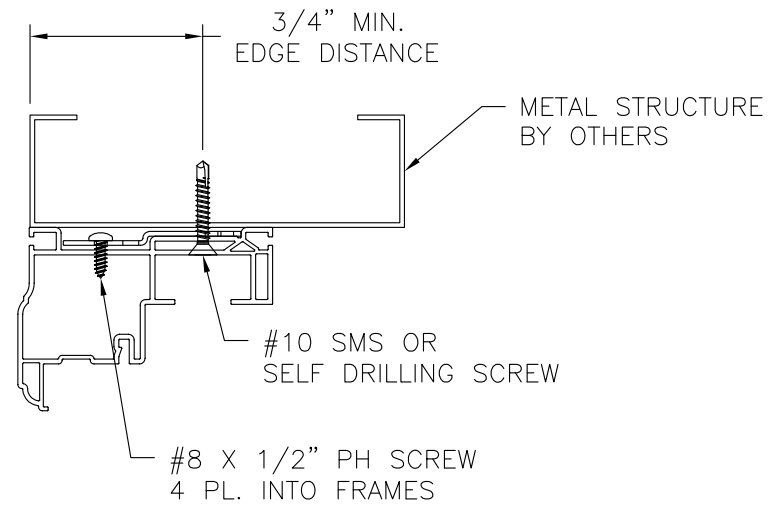
#8 X 1" PH SCREW  
4" EACH END, 12" O.C.

WINDOW FRAME  
REFERENCE ONLY



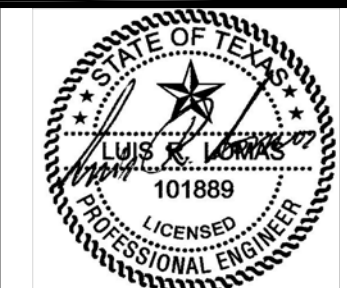
**VERTICAL SECTION**  
METAL STRUCTURE INSTALLATION

REVISIONS			
REV	DESCRIPTION	DATE	APPROVED



SIGNED: 09/15/2015

<b>VISTAMARK ENTERPRISES, LLC</b> 3637 N HIGHWAY 77, SUITE C WAXAHACHIE, TX 75165		
793.800 VERTICAL MULLION IMPACT REPLACEMENT INSTALLATION DETAILS		
DRAWN: R.L.	DWG NO. 08-02748	REV -
SCALE NTS	DATE 07/23/2015	SHEET 4 OF 9

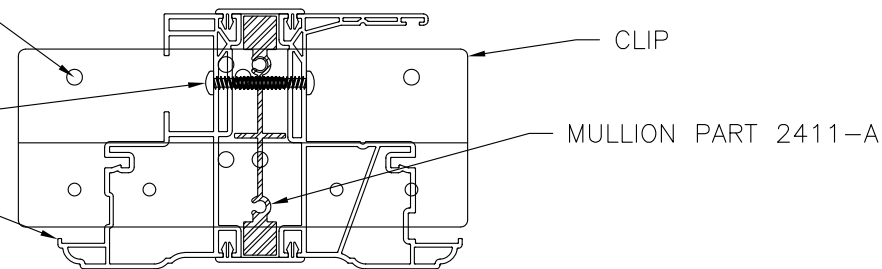


Luis R. Lomas P.E.  
TX No.: 101889

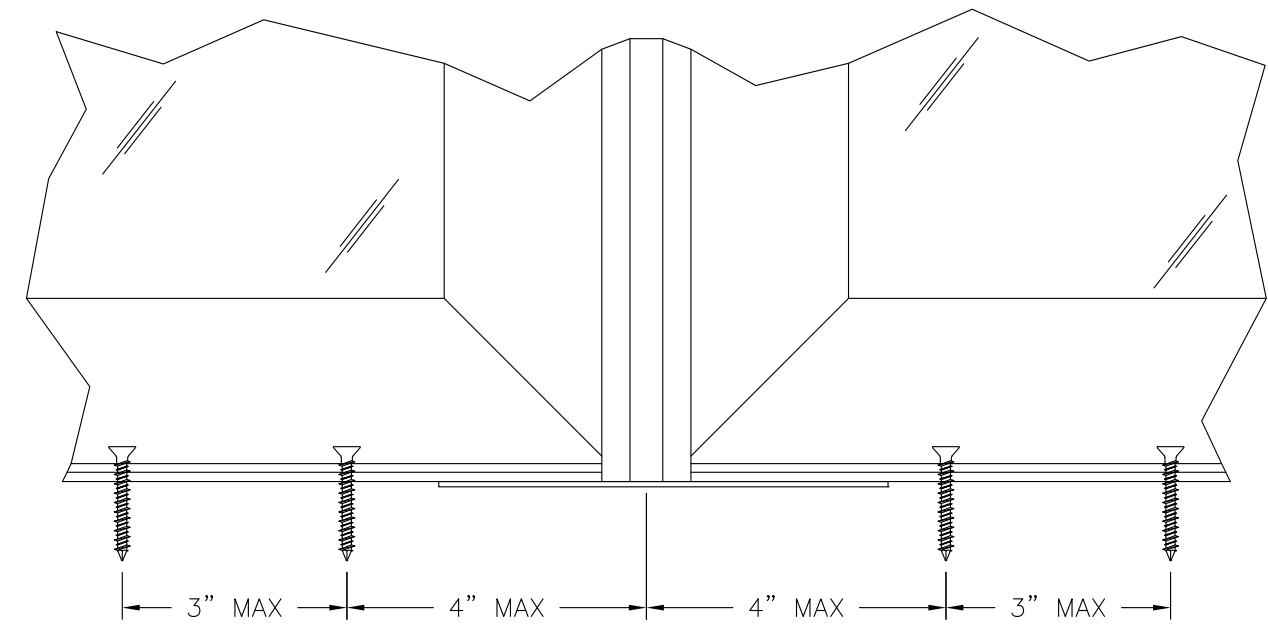
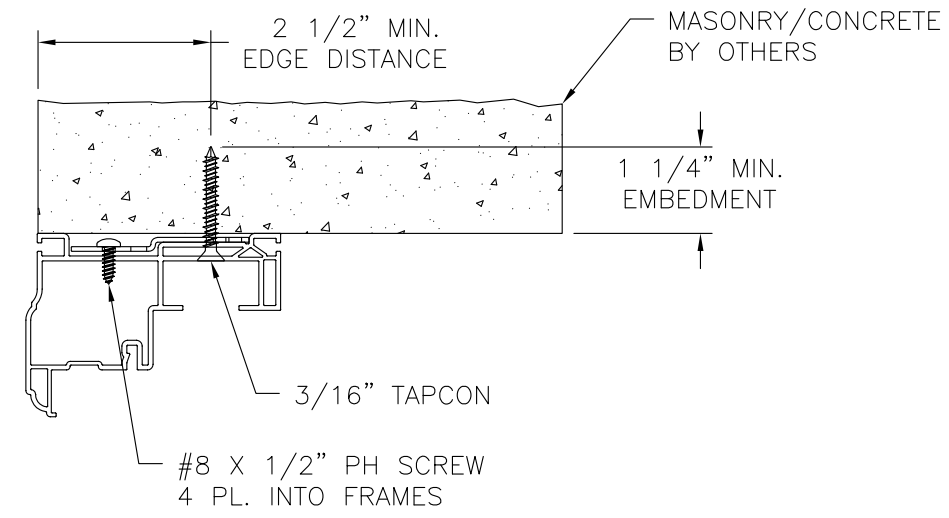
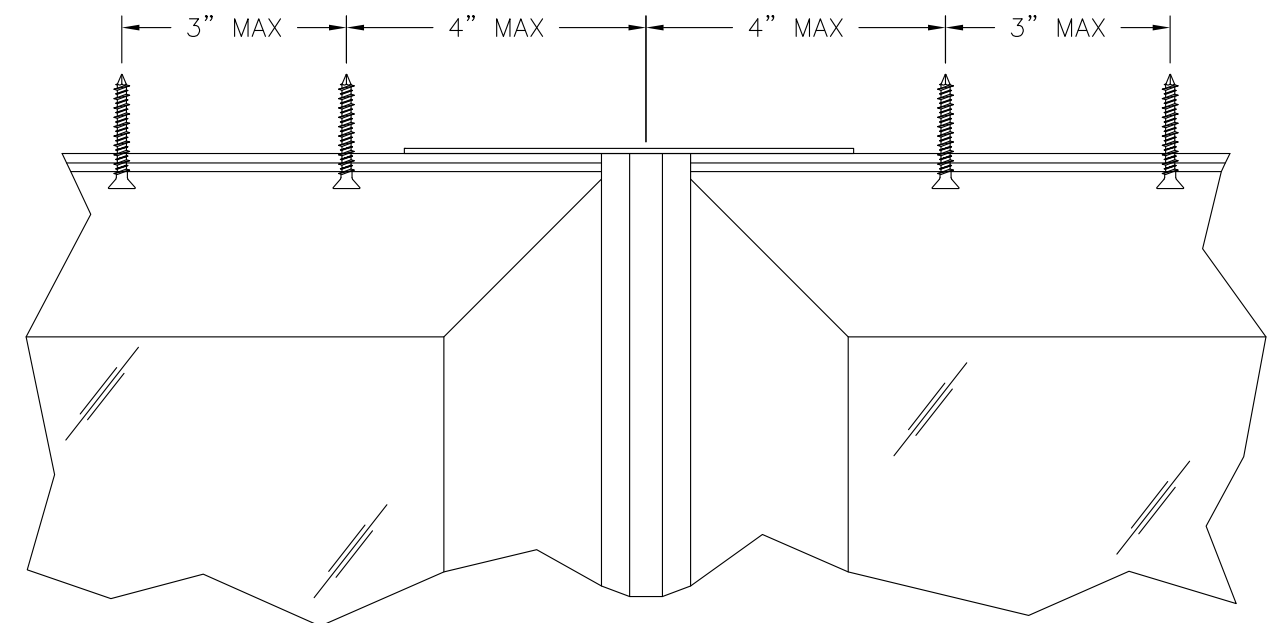
#8 X 1/2" PH SCREW  
4 PL. INTO FRAMES

#8 X 1" PH SCREW  
4" EACH END, 12" O.C.

WINDOW FRAME  
REFERENCE ONLY



REVISIONS			
REV	DESCRIPTION	DATE	APPROVED



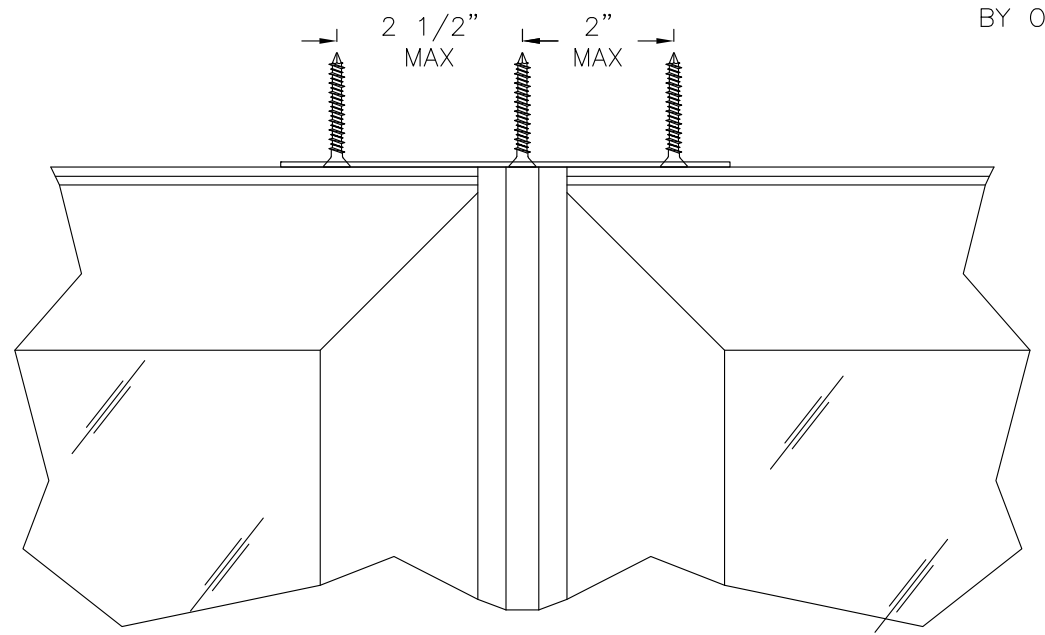
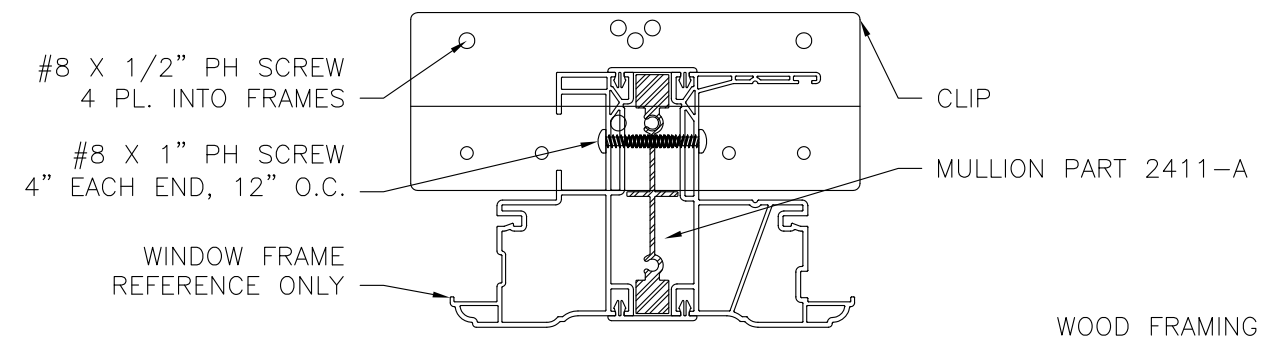
**VERTICAL SECTION**  
MASONRY/CONCRETE INSTALLATION

SIGNED: 09/15/2015

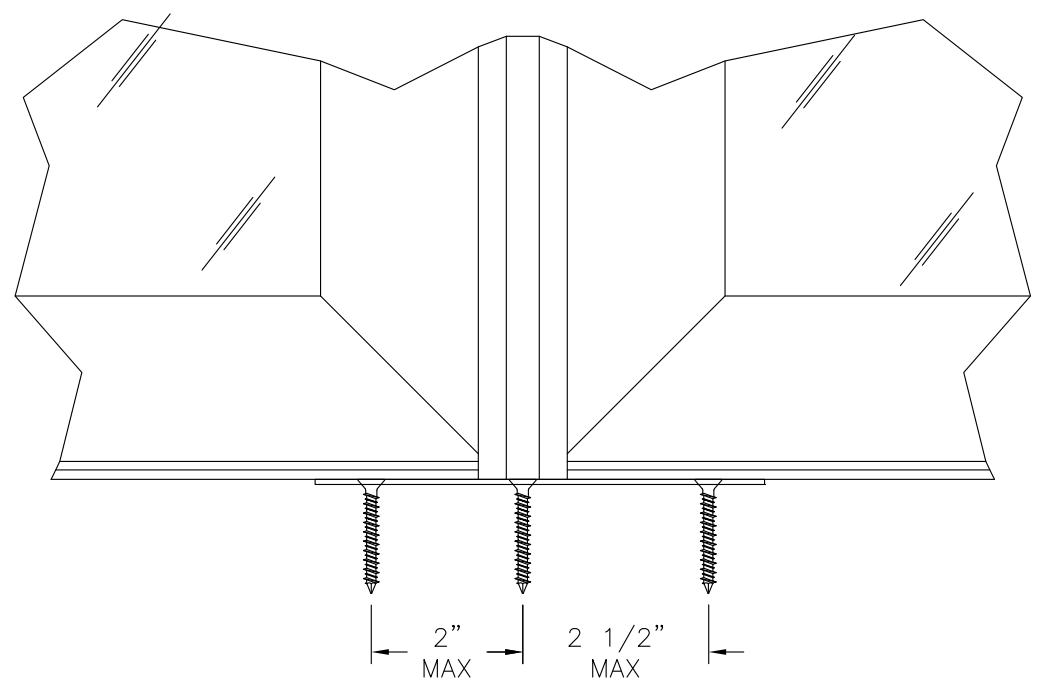
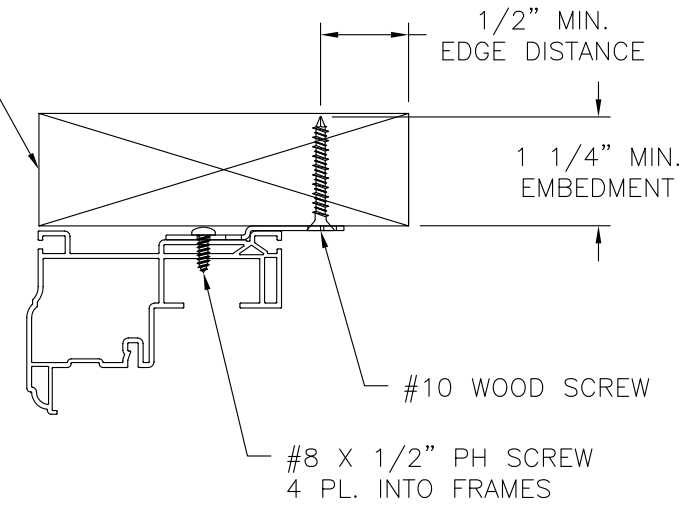
<b>VISTAMARK ENTERPRISES, LLC</b> 3637 N HIGHWAY 77, SUITE C WAXAHACHIE, TX 75165		
793.800 VERTICAL MULLION IMPACT REPLACEMENT INSTALLATION DETAILS		
DRAWN: R.L.	DWG NO. 08-02748	REV -
SCALE NTS	DATE 07/23/2015	SHEET 5 OF 9

Luis R. Lomas P.E.  
TX No.: 101889

REVISIONS			
REV	DESCRIPTION	DATE	APPROVED



WOOD FRAMING  
BY OTHERS



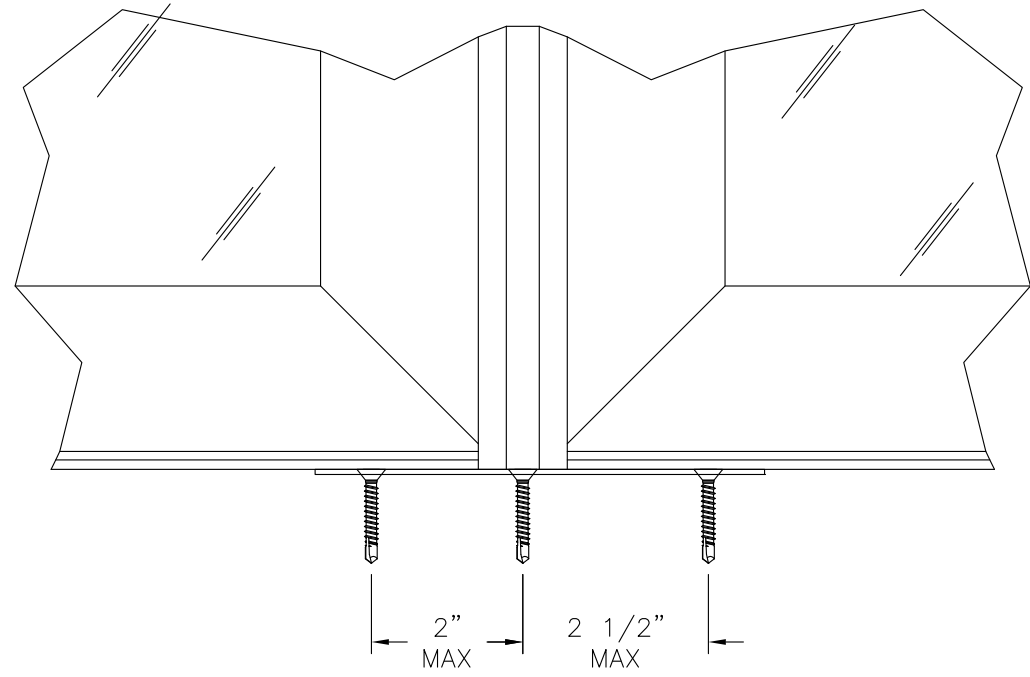
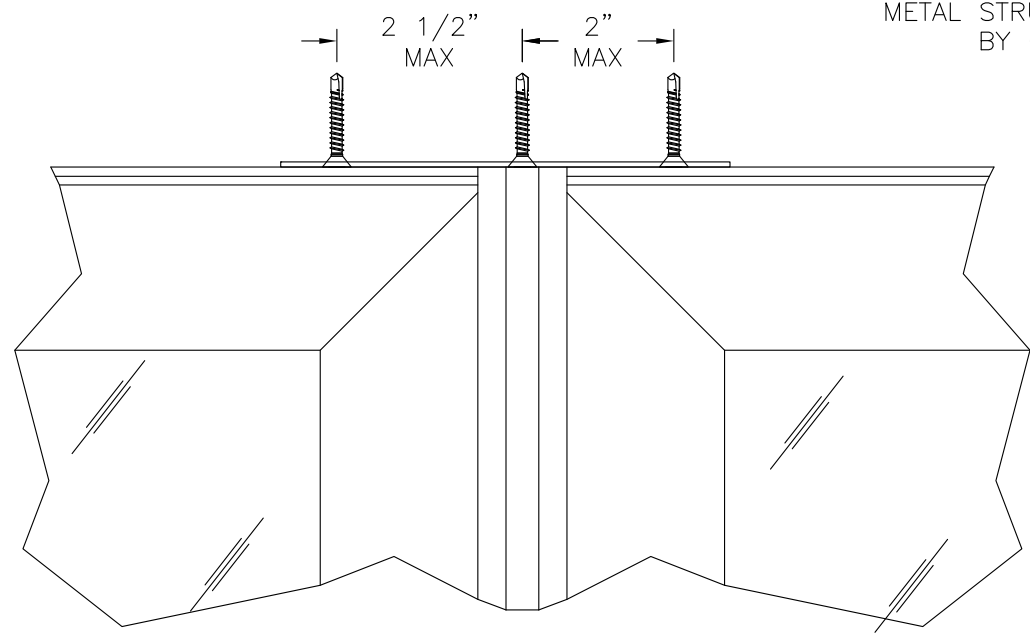
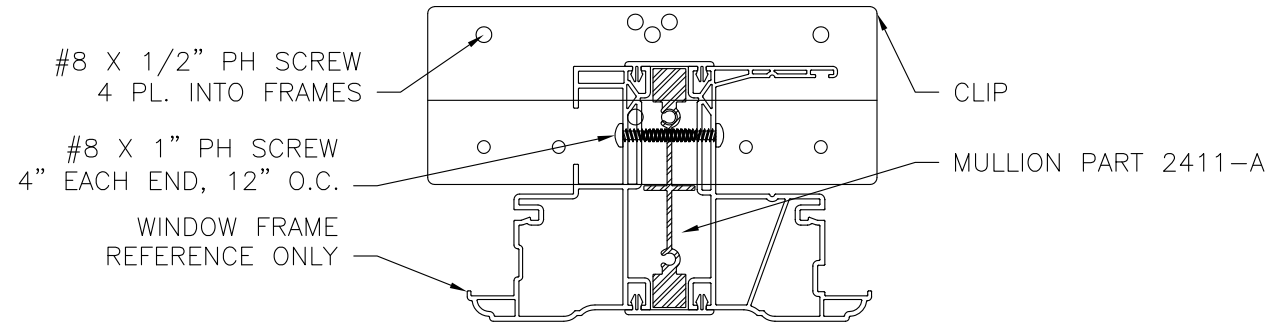
**VERTICAL SECTION**  
WOOD FRAMING OR 2X BUCK INSTALLATION

SIGNED: 09/15/2015

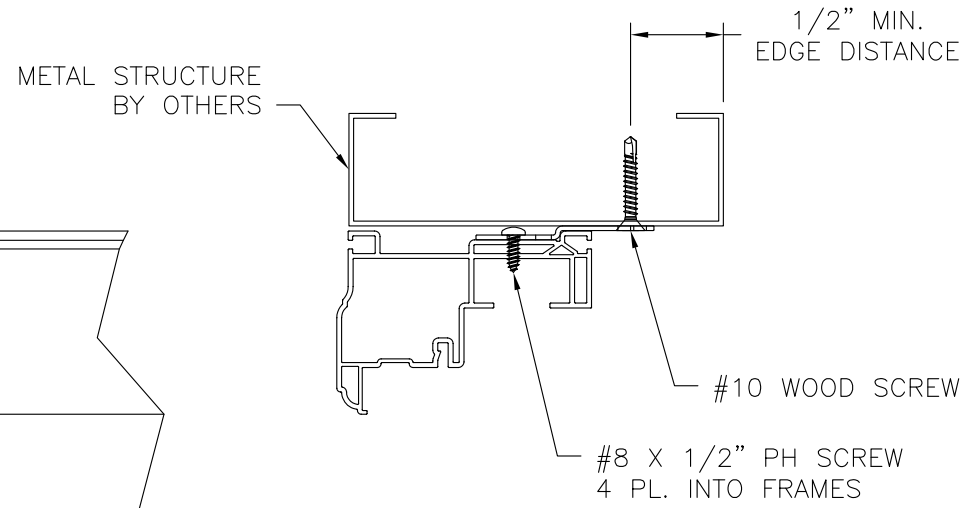
<b>VISTAMARK ENTERPRISES, LLC</b> 3637 N HIGHWAY 77, SUITE C WAXAHACHIE, TX 75165		
793.800 VERTICAL MULLION IMPACT NEW CONSTRUCTION INSTALLATION DETAILS		
DRAWN: R.L.	DWG NO. 08-02748	REV -
SCALE NTS	DATE 07/23/2015	SHEET 6 OF 9

Luis R. Lomas P.E.  
TX No.: 101889

REVISIONS			
REV	DESCRIPTION	DATE	APPROVED



**VERTICAL SECTION**  
METAL STRUCTURE INSTALLATION



VISTAMARK ENTERPRISES, LLC  
3637 N HIGHWAY 77, SUITE C  
WAXAHACHIE, TX 75165

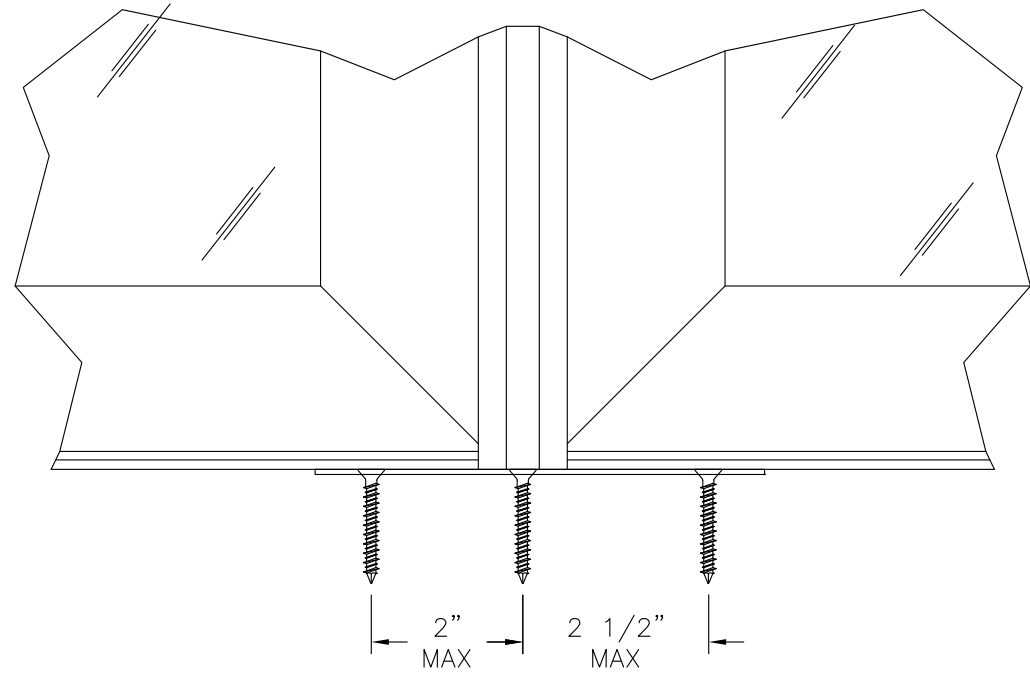
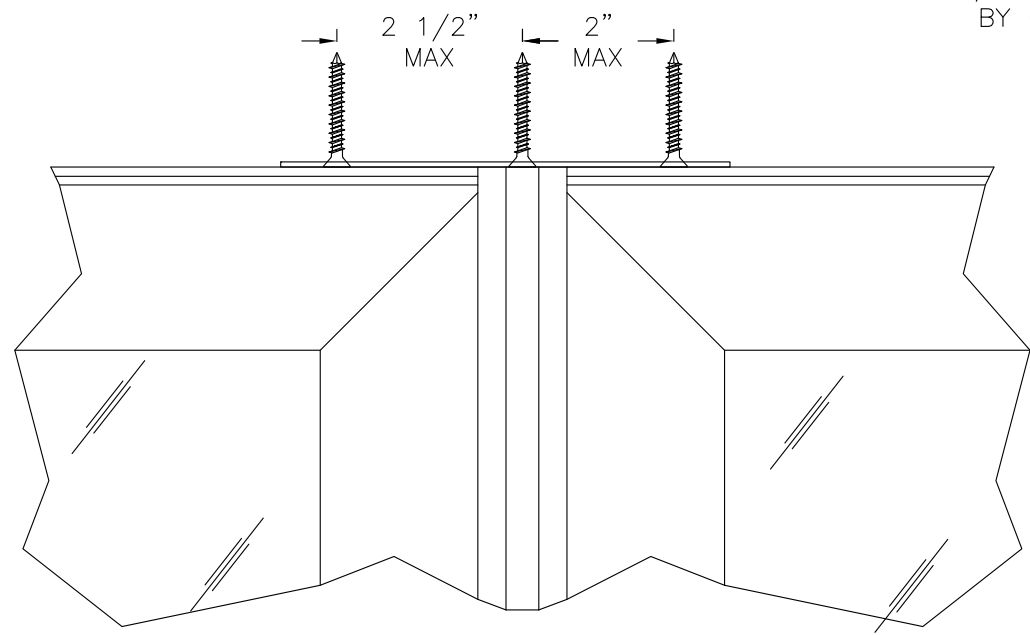
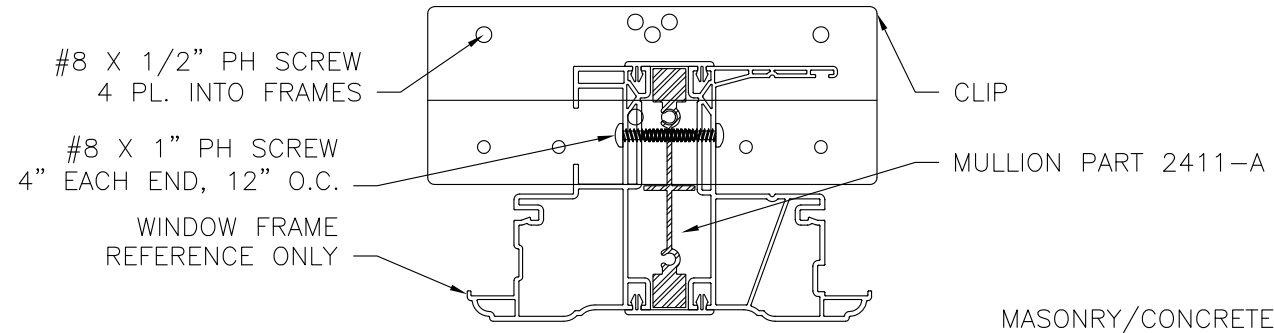
793.800 VERTICAL MULLION  
IMPACT  
NEW CONSTRUCTION INSTALLATION DETAILS

DRAWN: R.L.	DWG NO. 08-02748	REV -
SCALE NTS	DATE 07/23/2015	SHEET 7 OF 9

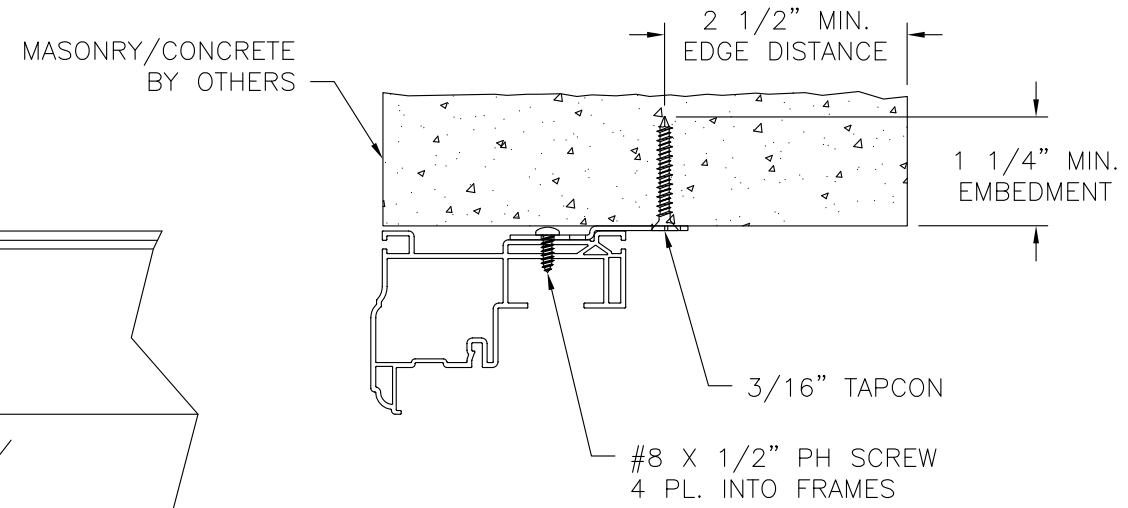
SIGNED: 09/15/2015

Luis R. Lomas P.E.  
TX No.: 101889

REVISIONS			
REV	DESCRIPTION	DATE	APPROVED



**VERTICAL SECTION**  
MASONRY/CONCRETE INSTALLATION



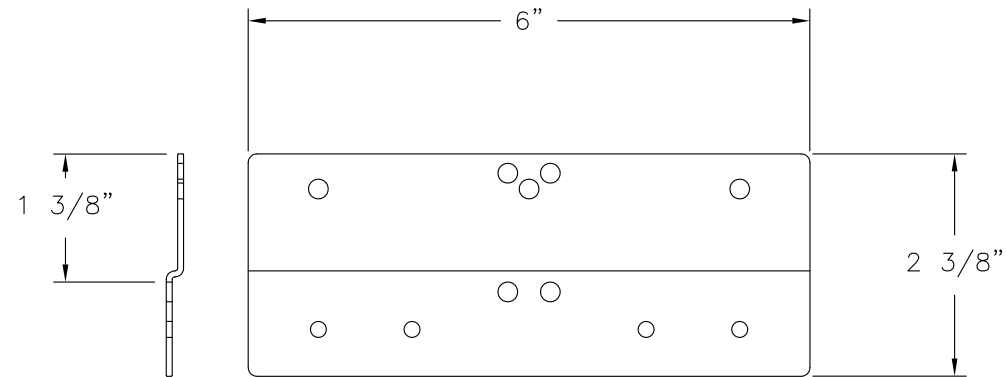
SIGNED: 09/15/2015

<b>VISTAMARK ENTERPRISES, LLC</b> 3637 N HIGHWAY 77, SUITE C WAXAHACHIE, TX 75165		
793.800 VERTICAL MULLION IMPACT NEW CONSTRUCTION INSTALLATION DETAILS		
DRAWN: R.L.	DWG NO. 08-02748	REV -
SCALE NTS	DATE 07/23/2015	SHEET 8 OF 9

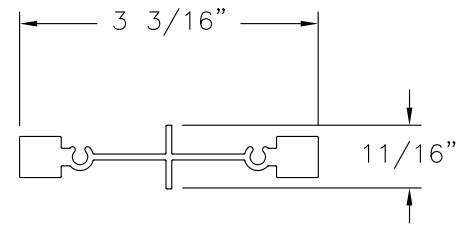
Luis R. Lomas P.E.  
TX No.: 101889



REVISIONS			
REV	DESCRIPTION	DATE	APPROVED



**CLIP DETAIL**  
GALVANIZED STEEL .0635" THICK



**MULLION PART 2411-A**  
ALUMINUM 6063-T6  
MOMENT OF INERTIA: .861 IN<sup>4</sup>  
SECTION MODULUS: .540 IN<sup>3</sup>

SIGNED: 09/15/2015

VISTAMARK ENTERPRISES, LLC 3637 N HIGHWAY 77, SUITE C WAXAHACHIE, TX 75165		
793.800 VERTICAL MULLION IMPACT COMPONENTS		
DRAWN: R.L.	DWG NO. 08-02748	REV -
SCALE NTS	DATE 07/23/2015	SHEET 9 OF 9



Luis R. Lomas P.E.  
TX No.: 101889